



Keeler

— A world without vision loss —

Product Showcase

Keeler Slit Lamps

Keeler Slit Lamps deliver a visually pleasing, customizable device using tried-and-tested optics and everything that the name stands for. We have worked hard to create a product that can adapt to your needs through design, configurability, and digital solutions.

Product range name	Slit lamp style (choose one)	Slit lamp drum type (choose one)	Slit lamp configuration (choose one)
KSL (Keeler Slit Lamp)	H H-Style	5 5-Step Drum	Traditional – No Code
	(OR)	(OR)	DR Digital Ready
	Z Z-Style	3 3-Step Drum	D Digital
FOR EXAMPLE, IF YOU CHOOSE A TRADITIONAL H STYLE SLIT LAMP WITH 3 DRUM MAGNIFICATION, THE CODE IS KSL-H3			
FOR EXAMPLE, IF YOU CHOOSE A DIGITAL H STYLE SLIT LAMP WITH 5 DRUM MAGNIFICATION, THE CODE IS KSL-H5-D			

For full details and specifications, please visit www.keelerusa.com

KSL-H KSL-Z





Portable Slit Lamps

Versatility and portability are the key benefits of the PSL One and PSL Classic slit lamps. Designed and manufactured with the strength to withstand the daily traumas of the demanding ophthalmic environment, both models are lightweight, durable, and robust. Their unique features set the new standard for portable slit lamps.

	PSL classic	PSL one
MAGNIFICATION	10x & 16x	10x
CHARGING BASE	Yes	No
DIRECT CHARGING	Yes	Yes
COLOR	Blue & white	Blue & black
ALUMINUM CASE	Yes	Option

For full details and specifications, please visit www.keelerusa.com



Binocular Indirects

Keeler has developed a reputation as the innovator in the development and manufacturing of indirect ophthalmoscopes. When you choose a Keeler indirect ophthalmoscope, you get sharp, clear images in a comfortable and balanced unit.



**FACE SHIELD
NOW INCLUDED**



Vantage Plus
Convertible

WIRED OR WIRELESS



All Pupil II
Convertible

WIRED OR WIRELESS



Vantage Plus
LED Digital

WIRELESS



Spectra Iris

WIRED

(ALL AVAILABLE WITH A VARIETY OF ACCESSORIES)

For full details and specifications, please visit www.keelerusa.com



Tonometry – Let's Fight Glaucoma



TonoCare

Designed with patient comfort in mind, the handheld TonoCare is simple to use and gives consistently fast and reliable readings. Soft air puff technology uses the air around us, so no disposables or pins are required.



Pulsair Desktop

The Pulsair Desktop is ideal for practices looking for value and efficiency. Clear user controls and a color video alignment screen sets a new standard in usability.



AccuPen Handheld Tonometer

Our gravity offset technology provides accurate measurements with less calibration in any testing position. The AccuPen is accurate, easy-to-use, portable, and versatile.

For full details and specifications, please visit www.keelerusa.com

Goldmann Applanation Tonometers

The Goldmann principle is the most widely accepted method of determining the approximate intraocular pressure. Keeler-manufactured applanation tonometers are designed and built to this exacting standard. They are all supplied with a reusable doubling prism and calibration check bar.



KAT – Keeler Applanation Tonometer

Keeler KAT Tonometers are designed to withstand the test of time and deliver reliable results year-after-year. Available in T-type, or R-type.



D-KAT – Digital Applanation Tonometer

D-KAT Tonometers contain an LED display and show readings up to 1 decimal point. Available in Z-type, T-type, and R-type.

For full details and specifications, please visit www.keelerusa.com



Tonoclear – Disposable Applanation Prism

Here at Keeler, we've been working hard to provide you with the safest tools to keep you and your patients as safe as possible. The Tonoclear is a Goldmann-style, single-use, applanation prism that provides a perfectly clear view of the miers during a routine examination.*

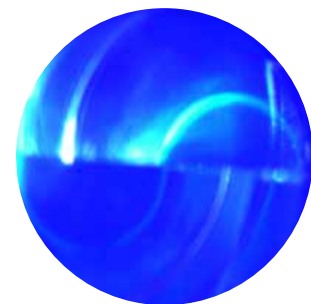
Features

Superior image quality – Provides a clear view of the miers, improving accuracy and speed of measurements.

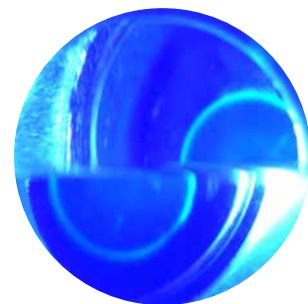
Compatibility – Works with all Goldmann applanation tonometers.

Sterility – Single-use and sterile; eliminates cross contamination. The Tonoclear can easily be thrown away after each use.

Easy packaging – Individually packed and sterilized. No assembly is required, making it easy and quick to install.



Competitor miers



Tonoclear miers

***Tonoclear can only be sold in the US.**

PachPen – Handheld Pachymeter



The PachPen is the perfect tool for testing a patient's corneal thickness with accuracy, portability, and comfort. The superior ergonomic design fits comfortably in any hand, offering a major advantage from other handheld models.

For full details and specifications, please visit www.keelerusa.com





Ultrasound Imaging – Connect Platform

Connect is a single application solution for managing your ultrasound patient workflow. Plug your A-Scan, B-Scan and/or UBM directly into a PC, laptop, or tablet. All patient data is easily updated to electronic medical records and can be stored, emailed, or printed quickly. With no software licenses, Connect can be taken anywhere – allowing you to load the software in multiple exam rooms and offices. Protect your investment with easily upgradeable software, and streamline your patient data by sharing information between each system.

For full details and specifications, please visit www.keelerusa.com





4Sight

The 4Sight is a single, easy-to-use, touchscreen platform for all ophthalmic ultrasound imaging. Mix-and-match your A-Scan, B-Scan, UBM, and pachymeter probes to make your job easier by eliminating wasted time switching modalities. The 4Sight is accurate, efficient, and affordable, making your job easier. The 4Sight software allows for any probe options to be used with the 4Sight or on a laptop with unsurpassed image quality.

For full details and specifications, please visit www.keelerusa.com



Keeler Handheld Instruments

A combination of optical perfection, superb ergonomics, and versatile features makes all Keeler handheld instruments the ideal choice. From basic examination to detailed diagnosis, there is a Keeler hand instrument for you.



Professional
Ophthalmoscope

LED OPTIONAL



Specialist
Ophthalmoscope

LED OPTIONAL



Combi
Retinoscope

LED OPTIONAL



Pocket
Ophthalmoscope



Finoff
Transilluminator



Jazz Otoscope
& Ophthalmoscope

(ALL AVAILABLE WITH A VARIETY OF ACCESSORIES)

For full details and specifications, please visit www.keelerusa.com

Surgical Loupes and Lights

Laser-aligned optics for magnification of superb optical quality; a lightweight aluminum assembly and precise pupil alignment system make Keeler Loupes the best choice for thousands of surgical professionals. Keeler Sport Frames can be worn over glasses, or your prescription can be incorporated into them. Choose from black, blue, and red.



Galilean
2.5X OR 3.0X (HIGH-RES)



Prismatic
3.5X, 4.5X, OR 5.5X



LED Illumination
**34,000 LUX OF HOMOGENOUS
COAXIAL WHITE LIGHT**

For full details and specifications, please visit www.keelerusa.com





Cryomatic MK II

The Cryomatic MK II auto-configures to the probe characteristics – electronic communication between the console and any probe that is connected to it allows for optimum operating parameters and self-adjustment. The main advantage to this – there is no need for manual setup at the start or during any procedure. Every probe will always perform optimally. This also means that the gas pressure will be set automatically – no manual adjustment needed.



Reusable Probes



Single-Use Probe

For full details and specifications, please visit www.keelerusa.com

Medical and Pharmaceutical Supplies

Keeler has a wide variety of diagnostic ophthalmic drugs and clinical supplies so that you have everything you need to take care of you and your patients.



Anesthetics



Antibiotics



Anti-Inflammatories



Dilating Drops



Glaucoma Agents



Injectable Dye



Topical Dye



Mydriatic Glasses



Punctum Plugs



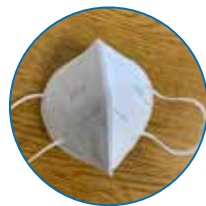
Tonometer Pen Covers



Plus much more! Visit www.keelersua.com

PPE – We are here for you and your patients

Here at Keeler, we have been working hard to provide the products needed to keep both you and your patients protected and safe. For more information on any of the products below, please visit our website www.keelerusa.com, email us at customerservice@keelerusa.com, or call us at 800-523-5620.



KN95 MASKS



MEDICAL MASKS



REUSABLE MASKS



YOUTH MASKS



**MASK LOOP
EARSavers**



**HAND SANITIZER
(33.81 OZ.)**



**HAND SANITIZER
(6 OZ.)**



**HAND SANITIZER
(16 OZ.)**



**X-LARGE SLIT
LAMP BREATH
SHIELD**



**LARGE SLIT LAMP
BREATH SHIELD**



BIO FACE SHIELD



**THE PHOROPTER
SHIELD™**



FACE SHIELD



**VIRTUA™ SAFETY
GLASSES**



SAFETY GOGGLES



**ANTI-BACTERIAL
CLEANER**



**DISPOSABLE
EYE PATCHES**



**NON-CONTACT
THERMOMETER**



**LEVEL 2 SMS
GOWNS**



Keeler

3222 Phoenixville Pike

Building 50

Malvern, PA 19355 USA

Toll Free: 1-800-523-5620

Tel: 610-353-4350

Fax: 610-353-7814

Email: customerservice@keelerusa.com

Website: www.keelerusa.com

Keeler Ltd.

Clewer Hill Road, Windsor

Berkshire, SL4 4AA, UK

Tel: +44 (0) 1753 857177

Fax: +44 (0) 1753 827145

Email: info@keeler.co.uk

Website: www.keeler.co.uk

Keeler

— A world without vision loss —



For a full product catalog, please scan this QR code by using any QR code reader app, or an iPhone camera.

Rev: 03092021