



## All Pupil II

Renowned optics in a durable, cost-effective, package

**Keeler**  
— A world without vision loss —



# All Pupil II

The Keeler All Pupil II is designed to provide ease of use combined with balanced comfort for regular use in a range of clinical applications through the binocular optical view used in conjunction with a condensing lens.

An Indirect Ophthalmoscope is an AC or battery-powered device containing illumination and viewing optics; and it is intended to be used to examine the cornea, aqueous, lens, vitreous and retina of the eye. The device is intended for use by a trained healthcare professional, and is mounted on the user's head.



## Key features

- Renowned Keeler binocular optics
- Intuitive controls and quick adjustments for ergonomic comfort
- Optional range of product options to fit your clinical setup needs
- Go Wireless patented technology leaves you free to move around without any wire or cord constraints
- Lightweight and comfortable, weighing just 520 grams with extra padded materials

# Light, bright and easy to use



Trusted globally,  
with a refined design

## Make your examinations easier and more comfortable

Utilising the same renowned Keeler optics as the Vantage Plus, the All Pupil II provides ease of use and comfort, from once a day to regular usage for a range of clinical applications.

The All Pupil II has been specifically designed as a durable, cost-effective solution without sacrificing on the optical quality.

## Filters and Apertures

P D Range: 47 - 75mm



## Outstanding brightness for difficult examinations

With 2000 lux of light, which can be turned down to 2% of total illumination when necessary, the All Pupil II offers maximum illumination with total control.

## Simple controls

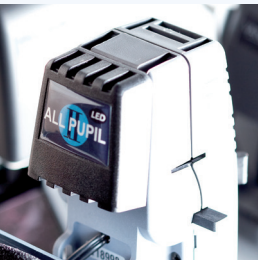
The All Pupil II has a unique single control to change aperture size and position in one movement to view through all pupil sizes.

## IR and UV barrier

There is a built in full time IR and UV barrier which guarantees improved patient protection and safety.

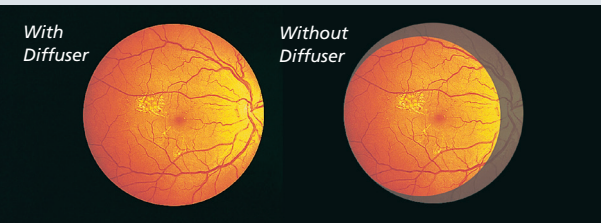
## All Pupil II LED light source

Plugs simply into the back of the All Pupil II for brighter, whiter illumination and freedom from purchasing bulbs. The LED life expectancy is up to 10,000 hours and it has a 5 year warranty.



## Wide angle diffuser

The Keeler wide angle diffuser eliminates shadows on the edge of the condensing lens expanding the field of view significantly, particularly useful during difficult and peripheral examinations. There is also less discomfort for the patient because the light is softer.



## Teaching Mirror

The teaching mirror just slides on and off with ease allowing two observers to view the retina at the same time.

## Part Numbers

### All Pupil II Indirect Ophthalmoscope

1205-P-2000	AP II LED Wireless Slimline
1205-P-2002	AP II LED Corded
1205-P-2008	AP II LED Wireless Slimline with Blue Filter
1204-P-3036	AP II Corded without Power in Carton
1204-P-3038	AP II Corded Kit A with Power / Accessories In Case
1204-P-3041	AP II Wireless Kit A with Power / Accessories
1204-P-3043	AP II Wireless with Lithium Battery and Holder
1204-P-3100	AP II Corded without Power
1204-P-3102	AP II Corded with Blue Filter

### Accessories

1012-P-5110	AP II Halogen Bulb
1012-P-7003	AP II Bulbs (qty 2)
1012-P-7008	AP II LED Upgrade Kit
1201-P-6067	Large Depressor
1201-P-6075	Small Depressor
1202-P-7117	AP II Teaching Mirror
1205-P-5014	AP II LED
1205-P-7034	Binocular Indirect Face Shield
2105-K-1159	Volk 20D Black Condensing Lens
2199-P-7136	Lens Cloth
2415-P-7136	Instructions for Use
3412-P-5100	AP II Accessory Case
3412-P-7000	AP II Carrying Case



# Wireless Power Supplies

Keeler wireless technology allows you to move from room to room without any constraints. The chargers are either desktop or wall mountable and store an extra lithium battery as a back up, should you need it.



Slimline Lithium Polymer Battery (paper clip shows scale)

## Slimline Lithium Polymer Battery

The New Slimline Lithium Polymer battery can give you up to 6 hours of use, weighs only 53 grams, and is nearly 70% lighter than the standard battery. It is also much smaller and can fit nicely into the palm of your hand.

## Slimline Wireless Charger

The new wall mountable charger remains as durable as the Standard Wireless battery charger with the facility to store your extra battery in the top compartment. The charger has an easy release button to remove your extra battery.



Slimline Wireless Charger

Standard Lithium Battery

Slimline Lithium Polymer Battery



Slimline Lithium Polymer Battery

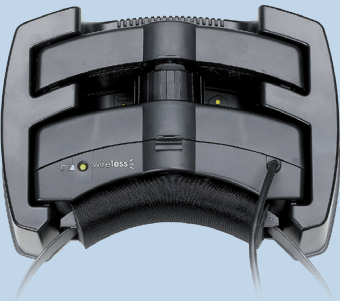
## Standard Lithium Battery

Our original lithium battery lasts up to 11 hours of use and fits neatly into the charging unit.



## Standard Wireless Charger

The Standard Wireless Charger can be wall or desk mounted with space for a spare battery, which means you will always have a back up. An LED indicates when the battery needs charging.



# Part Numbers

## Slimline and Standard Chargers and Batteries

- 1945-P-5019 Slimline Charger for Wireless AP II
- 1919-P-5338 Slimline Battery for Wireless AP II
- 1945-P-5334 Standard Charger for Wireless AP II
- 1919-P-1013 Standard Battery for Wireless AP II

# Wired Power Supplies

## SmartPack

SmartPack is a stylish power supply system that combines 3 options in one product.

No longer will you need to purchase a portable system for domiciliary use, another system for mounting on your wall and another for tabletop use.

## WallPack

Alternatively, if your power supply needs to be stationary you can purchase the WallPack which fits neatly on the wall. Your indirect can be mounted on the bracket it comes with.



WallPack



SmartPack

# Which system is right for you?

All Pupil II Usable Life	
Power Source	Natural LED
Slimline Battery	6 hours*
Standard Battery	11 hours*
SmartPack	17 hours*

\* This measurement is based upon the illumination being used at normal examination power

# Part Numbers

## SmartPack and WallPack

- 1945-P-1001 SmartPack for Wired AP II
- EP39-22079 SmartPack Battery
- 1945-P-1000 WallPack for Wired AP II



# The Keeler Binocular Indirect Face Shield

## Helping doctors stay safe

Providing a barrier between both patients and user to reduce potential transmission of harmful virus, designed with a simple pop on and off attachment mechanism.



## What's in the box?

### All Pupil II Indirect Ophthalmoscope

<b>1205-P-2000</b> ALL PUPIL II LED WIRELESS SLIMLINE	<ul style="list-style-type: none"><li>• All Pupil II Indirect Ophthalmoscope</li><li>• Wall-mounted charging unit</li><li>• Slimline battery</li><li>• Keeler BIO face shield</li><li>• Lens cloth</li><li>• +2D and plano ocular lenses</li><li>• Instructions for use</li></ul>
<b>1205-P-2002</b> ALL PUPIL II LED CORDED	<ul style="list-style-type: none"><li>• All Pupil II Indirect Ophthalmoscope</li><li>• Corded assembly</li><li>• Keeler BIO face shield</li><li>• Lens cloth</li><li>• +2D and plano ocular lenses</li><li>• Instructions for use</li></ul>
<b>1205-P-2008</b> ALL PUPIL II LED WIRELESS SLIMLINE WITH BLUE FILTER	<ul style="list-style-type: none"><li>• All Pupil II Indirect Ophthalmoscope with blue filter and no diffuse filter</li><li>• Wall-mounted charging unit</li><li>• Slimline battery</li><li>• Keeler BIO face shield</li><li>• Lens cloth</li><li>• +2D and plano ocular lenses</li><li>• Instructions for use</li></ul>
<b>1204-P-3038</b> ALL PUPIL II CORDED WITH ACCESSORIES KIT	<ul style="list-style-type: none"><li>• All Pupil II Indirect Ophthalmoscope</li><li>• Corded assembly</li><li>• Halogen bulb</li><li>• Carry case</li><li>• Keeler BIO face shield</li><li>• Teaching mirror</li><li>• Blue Volk 20D condensing lens</li><li>• Small thimble</li><li>• Large thimble</li><li>• FBO charts pad of 50</li><li>• Set of 12 coloured pencils</li><li>• Lens cloth</li><li>• +2D and plano ocular lenses</li><li>• Instructions for use</li></ul>

<b>1204-P-3036</b> ALL PUPIL II CORDED WITHOUT POWER IN CARTON	<ul style="list-style-type: none"><li>• All Pupil II Indirect Ophthalmoscope</li><li>• Halogen bulb</li><li>• Keeler BIO face shield</li><li>• Lens cloth</li><li>• +2D and plano ocular lenses</li><li>• Instructions for use</li></ul>
<b>1204-P-3041</b> ALL PUPIL II WIRELESS WITH ACCESSORIES KIT	<ul style="list-style-type: none"><li>• All Pupil II Indirect Ophthalmoscope</li><li>• Standard battery</li><li>• Halogen bulb</li><li>• Carry case</li><li>• Keeler BIO face shield</li><li>• Teaching mirror</li><li>• Blue Volk 20D condensing lens</li><li>• Small thimble</li><li>• Large thimble</li><li>• FBO charts pad of 50</li><li>• Set of 12 coloured pencils</li><li>• Lens cloth</li><li>• +2D and plano ocular lenses</li><li>• Instructions for use</li></ul>
<b>1204-P-3043</b> ALL PUPIL II WIRELESS LITHIUM BATTERY	<ul style="list-style-type: none"><li>• All Pupil II Indirect Ophthalmoscope</li><li>• Lithium battery</li><li>• Charger</li><li>• Halogen bulb</li><li>• Keeler BIO face shield</li><li>• Lens cloth</li><li>• +2D and plano ocular lenses</li><li>• Instructions for use</li></ul>
<b>1204-P-3100</b> ALL PUPIL II CORDED WITHOUT POWER WALL-MOUNT	<ul style="list-style-type: none"><li>• All Pupil II Indirect Ophthalmoscope</li><li>• Cable assembly</li><li>• Halogen bulb</li><li>• Keeler BIO face shield</li><li>• Lens cloth</li><li>• +2D and plano ocular lenses</li><li>• Instructions for use</li></ul>
<b>1204-P-3102</b> ALL PUPIL II CORDED WITH BLUE FILTER	<ul style="list-style-type: none"><li>• All Pupil II Indirect Ophthalmoscope with blue filter and no diffuse filter</li><li>• Corded assembly</li><li>• Halogen bulb</li><li>• Keeler BIO face shield</li><li>• Lens cloth</li><li>• +2D and plano ocular lenses</li><li>• Instructions for use</li></ul>

## Specifications

### All Pupil II System

OCULAR EYE LENSES	+2D as standard (plano optional)
LIGHT OUTPUT	1500 Lux
COLOUR TEMPERATURE OF LED	3800K
ILLUMINATION MIRROR ADJUSTMENT ABOUT CENTRE AXIS	84mm up, 53 mm down
ADJUSTMENT RANGE OF OPTICS	+/- 4 degrees
WORKING DISTANCE	Nominal 440mm
PUPIL SIZE	1-10mm
PD RANGE	47-75mm
BATTERY	Up to 2 hours continuous on a single charge
CLEANING	Wipe with water / isopropyl alcohol solution (70% IPA by volume)
FILTERS	<div><div></div> Red-free <div></div> Diffuser</div> <div><div></div> Optional cobalt blue filter</div>
PATCH DIAMETER	20mm, 40mm, 60mm
APERTURE	<div></div> Large <div></div> Intermediate <div></div> Small
TEMPERATURE LIMITS	Operation +10°C to +35°C Storage -10°C to +55°C Transport -40°C to +70°C
HUMIDITY LIMITS	Operation 30% to 75% Storage 10% to 95% Transport 10% to 95%

### Electrical Ratings

INPUT MAINS DATA	100-240V - 50/60Hz
POWER SUPPLY RATING	12V : 2.5amps
PHOTOCHEMICAL SOURCE RADIANCE	1mm aperture (mW cm <sup>-2</sup> sr <sup>-1</sup> )
APHAKIC, LA (305-700nm)	1.32
PHAKIC, LB (380-700nm)	1.16

### Dimensions and Weight

DIMENSIONS	150 x 230 x 310mm (HxWxD)
WEIGHT	520g

### Classification and Safety Standards

OPTICAL RADIATION COMPLIANCE	BS EN ISO 15004 part 1: 1997
CLASSIFICATION	Class II Equipment. Type B protection against shock



## All Pupil II Overview

The Keeler All Pupil II is a head-mounted indirect ophthalmoscope, designed to provide ease of use combined with balanced comfort for regular use in a range of clinical applications through the illuminated binocular optical view.

This is intended to be used in conjunction with a condensing lens as prescribed through indirect ophthalmoscopy techniques to illuminate and examine the fundus.

This equipment is to be used only by a healthcare professional.

### More Keeler Instruments

With over 100 years of industry experience, Keeler has become a household name among optometrists and ophthalmologists worldwide.

View our full range at

[www.keeler.co.uk](http://www.keeler.co.uk) | [www.keelerusa.com](http://www.keelerusa.com)

### Got a question? - Call us

UK: +44 (0)1753 857177 India: +91 99 3031 1090

USA: +1 800 523 5620 Brazil: +55 11 4302 6053

China: +86-18512119109

**Keeler**  
— A world without vision loss —



A **Halma** company

### Manufacturing address



Keeler Ltd. Clewer Hill Road Berkshire SL4 4AA UK



REV C