

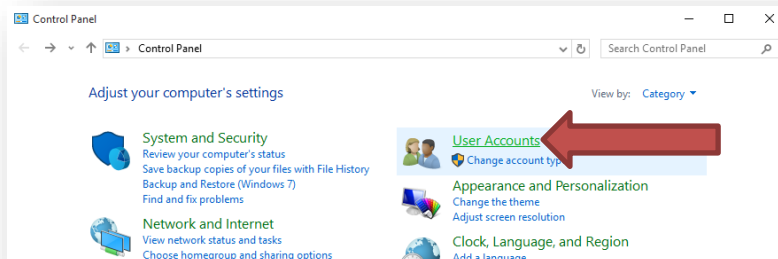
Installing To Windows 10 (64 bit)

Pre-Installation settings (Turn off user account controls)

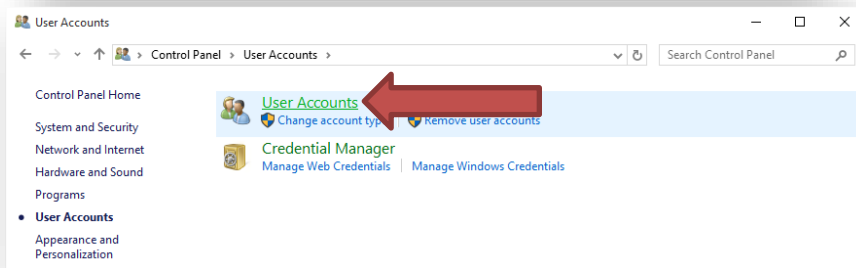
- Control Panel
 - At the Desktop, Right Click on the Windows Start Icon and select **Control Panel**



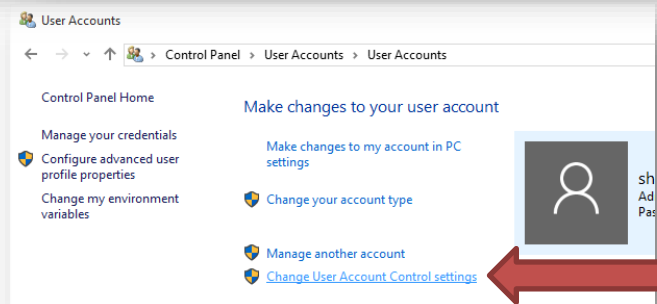
Select User Accounts



Select User Accounts again



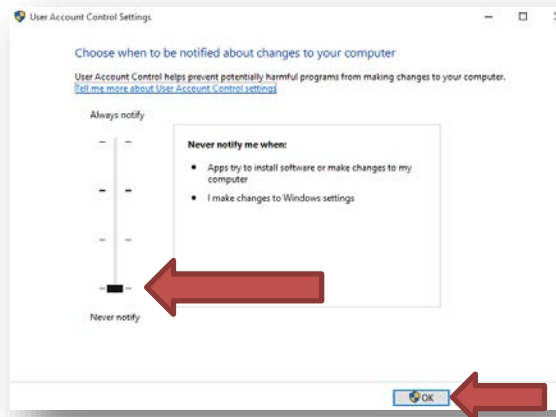
Select Change User Account Control Settings



Installing To Windows 10 (64 bit)

Drag Slide-bar to **Never Notify**

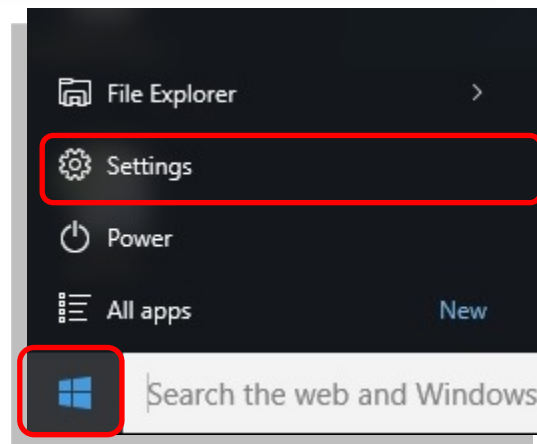
Select OK



Change PC Settings (Windows

10)

- Settings
 - Click on Windows Icon
 - Click on Settings

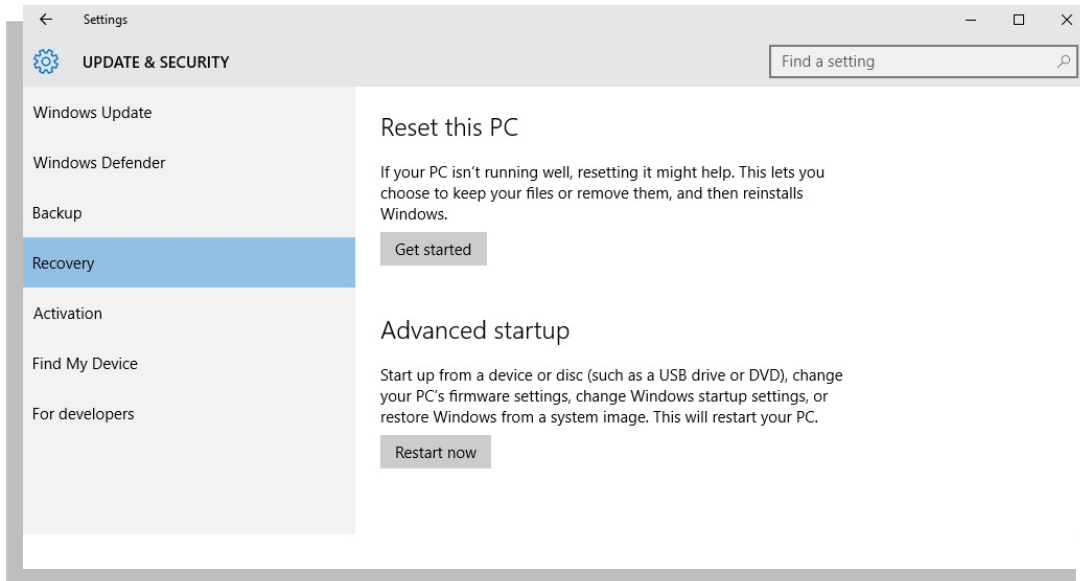


- Click on Update and Security



- Select Recovery
- Select Restart Now

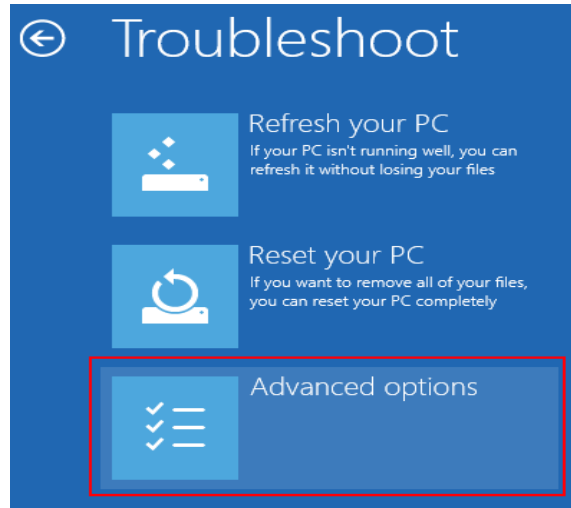
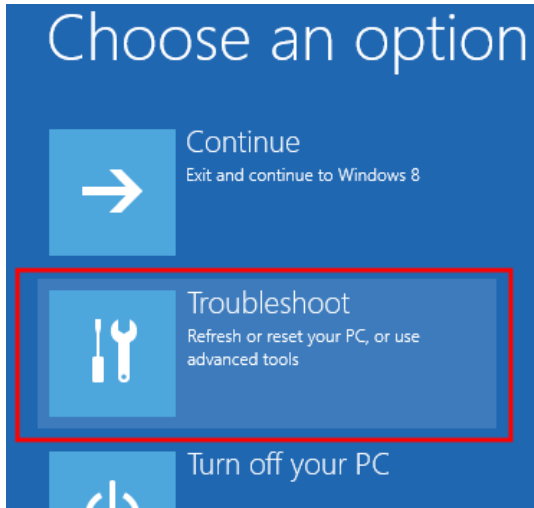
Installing To Windows 10 (64 bit)



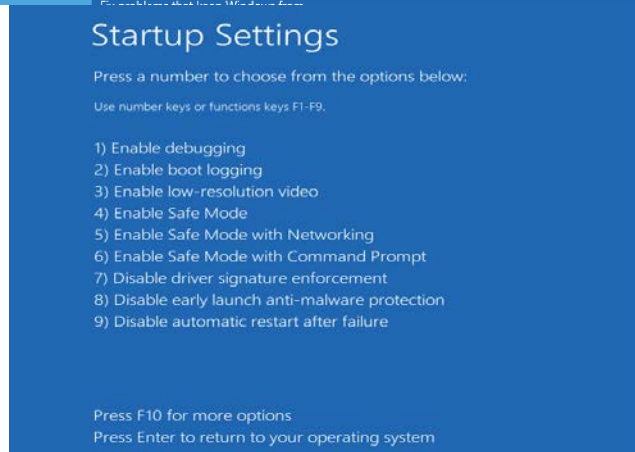
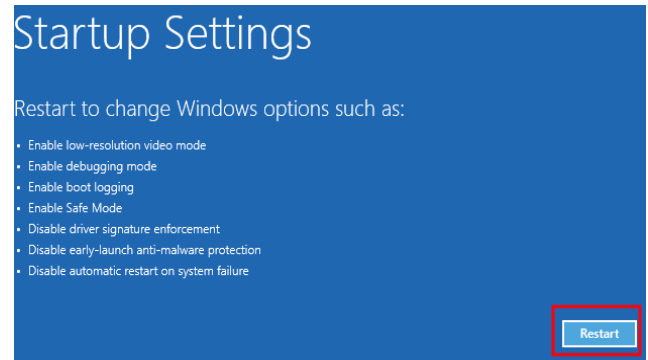
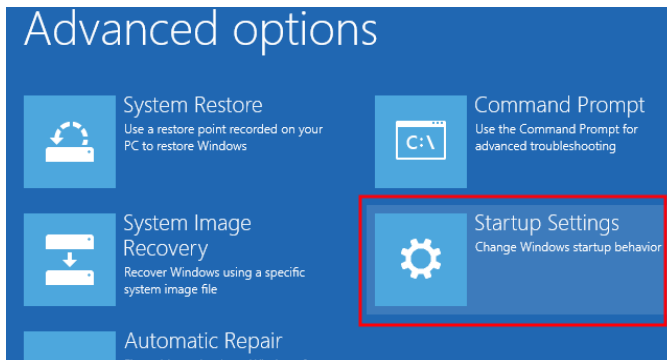
Restart Screen

- Select the box labeled **Trouble Shoot**
 - In Trouble Shoot Menu select **Advanced Options**

Installing To Windows 10 (64 bit)



- Select **Startup Settings**
 - Under Startup Settings select the **Restart** box in the bottom right corner



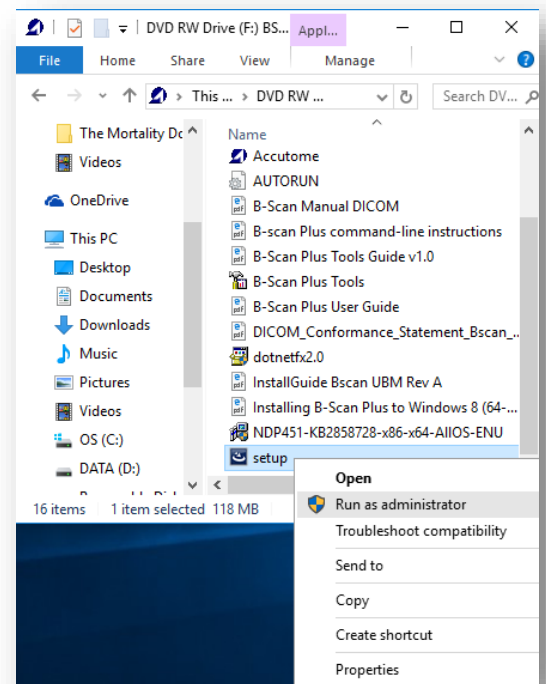
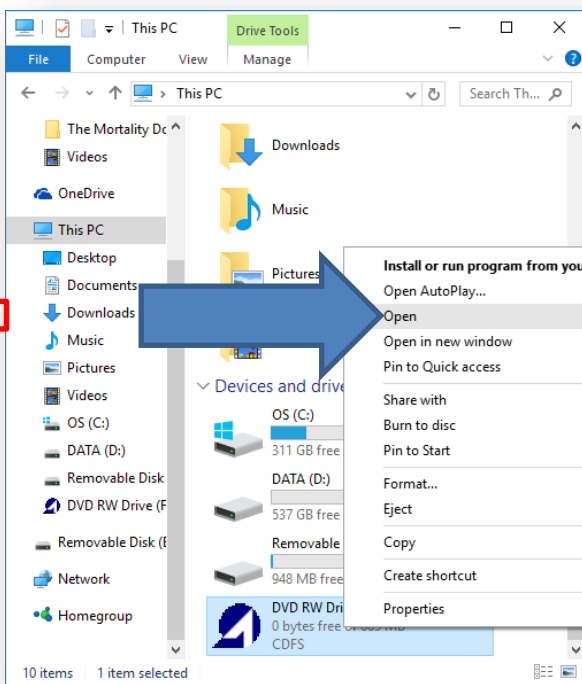
- In the next screen you will either select **Disable Driver Signature Enforcement** or press either **4** or **5**. This will then restart the computer with the DSE disabled.

Run as Administrator

For Additional Help Contact Accutome at 1-800-979-2020

Installing To Windows 10 (64 bit)

- Once computer has restarted after the DSE has been disabled, open File Explorer (Click on Windows start menu, Select File Explorer from List)
(Make sure Installation Disk is Loaded)
- **Select This PC** from the list
- Right click on the Accutome B-Scan software disk and select **Open**
 - Locate **Setup**
 - Right click on **Setup** and select **Run as Administrator**



For Additional Help Contact Accutome at 1-800-979-2020